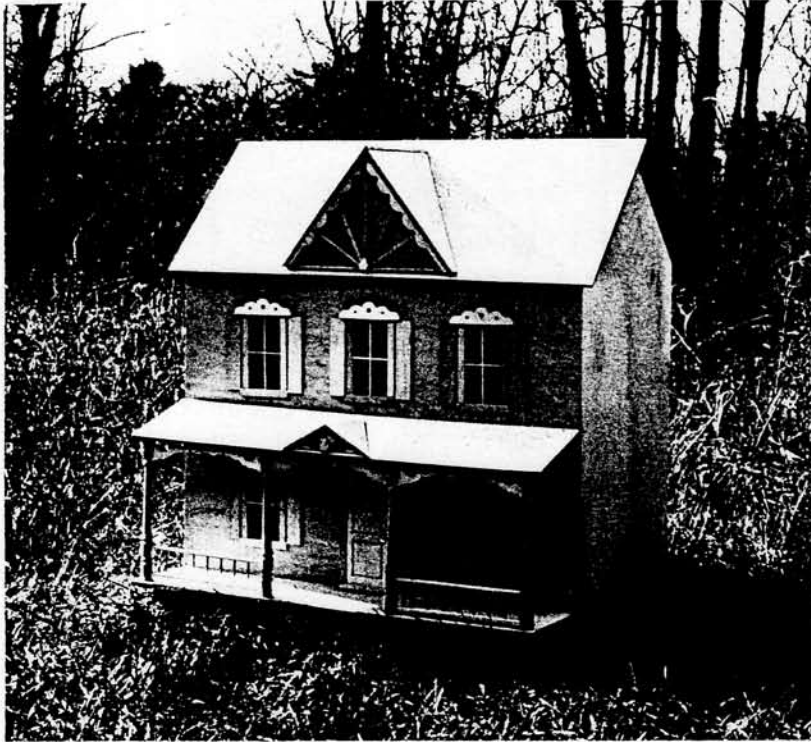


Have You Found The Right Dollhouse Yet?

All It Takes Is BEGINNER'S LUCK™

Beginner's Luck* is a Victorian Gingerbread House.

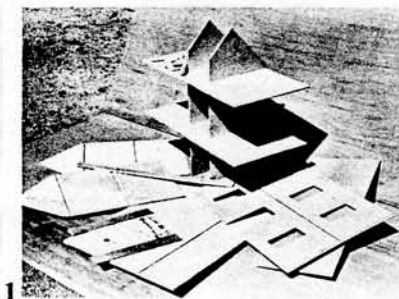


1 Beginner's Luck* is Complete with Plexiglass windows, wooden mullions, inside and outside window and door trim, a panelled door with brass hinges and knob, and shutters.

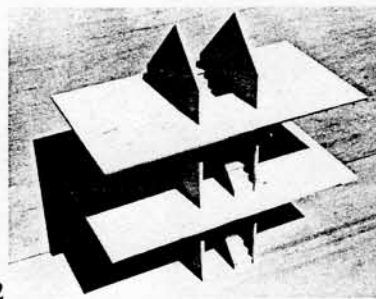
2 Beginner's Luck* is easy to assemble. Slotted and

grooved construction—created especially for this house by Real Good Toys*—makes assembly a cinch.

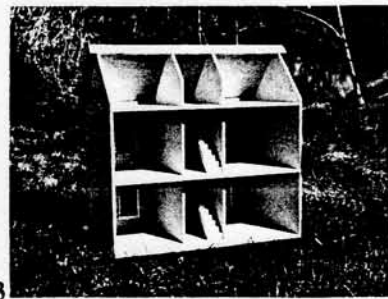
3 Beginner's Luck* (28" LX 28" WX 21" D) has 9 big rooms and 2 staircases. Window and door openings are cut to accommodate standard-sized components.



1



2

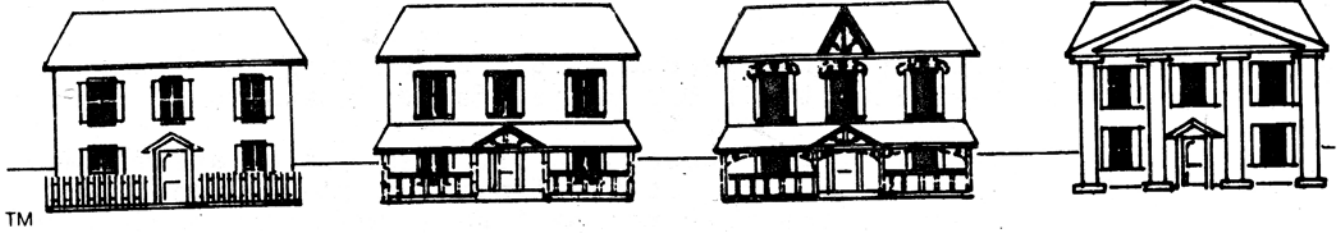


3

- Easy assembly
- All openings accept standard components
- Precision pre-cut parts
- All wood construction
- Built to last
- Handmade by Vermont Craftspeople

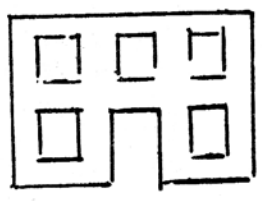
CALL: (802) 479-2217

Real Good Toys • 10 Quarry Hill • Barre, VT 05641

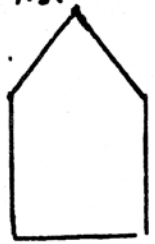


Beginner's Luck™

Here's the parts list:



FRONT PIECE (1)



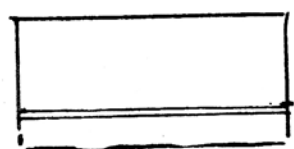
OUTSIDE WALL (2)



INSIDE WALL PANEL (2)



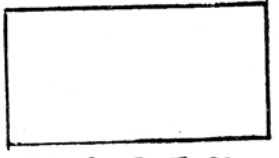
MIDDLE FLOOR (2)



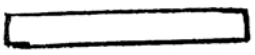
BOTTOM FLOOR



DOOR



WIDE ROOF PANEL



NARROW ROOF PANEL

1/8" plywood strips

- 5 vertical mullions - 1/8 x 1/8 x 2 1/2"
- 5 horizont. mullions - 1/8 x 1/8 x 4 1/2"
- 1 inside top door trim - 1/2 x 4 1/16"
- 10 inside wind. vertical - 1/2 x 4 1/2"
- 4 inside fence backing
 - side section - 1/2 x 6"
- 4 inside fence backing
 - front section - 1/2 x 11 3/4"
- 2 fence bottom trim
 - side section - 3/8 x 6 3/16"
- 2 fence bottom trim
 - front section - 3/8 x 12"
- 10 top horizontal wind. trim
 - 1/2 x 3 9/16"
- 1 outside top door trim - 1/2 x 4 1/16"
- 10 outside wind. vertical - 1/2 x 4 1/2"
- 1 inside door piece - 1/2 x 6 11/16"
- 4 vertical door casing - 1/2 x 7"
- 12 stair treads - 7/8 x 2"
- 10 shutters 1 1/16 x 4 3/4"
- 1 large stair tread - 1 3/8 x 2"

ADDITIONAL PIECES:

- 5 bottom horiz. window trim (sills)
 - 1/2 x 1/2 x 3 9/16"
- 5 plexi. windows
- 2 hinges
- 1 door knob
- 8 1/2" nails
- 1 lauan stair bottom - 1/4 x 2 x 13 1/2"
- 13 stairs - triangular, 2" long
- 1 door overhang triangle
- 2 door overhang roofs - 1/4 x 1 1/2 x 3"
- 72 pickets/vertical fence slats -
 - 3 1/2" long
- front step - 1/2" x 3" x 3"



Real Good Toys
10 Quarry Hill
Barre, VT 05641

These instructions are separated into 2 parts: assembling the frame of the house, and assembling the front piece, fence, & stairs.

Before the final assembly of the house, the front should be assembled. However, it will be much easier to put the finishing touches on (paint, paper, etc) before attaching the trim to the front. You'll probably want to assemble the house first, just to take a look, make sure the parts fit, and decide what colors to use.

SO- start with the frame assembly. We suggest that you tack it together the first time with 1/2" (if you're not used to them) or 3/4" (if you're confident) brads or nails. They will be sufficient to hold it together while you look it over, and do not mar the surface. But remember you might want to take it apart again, so don't use TOO many nails. When you're ready for final assembly, combine Elmer's Glue and nails.

FIRST:

SPREAD OUT THE PIECES AND GROUP THE ONES THAT ARE THE SAME. COMPARE YOUR PARTS WITH THE PARTS LIST...IF THERE IS ANYTHING DAMAGED OR MISSING, LET US KNOW IMMEDIATELY! WE WILL REPLACE IT.

FRAME ASSEMBLY: This house is built from the inside out. First we'll assemble the inside walls and floors, and then the outside walls. -start with an inside wall panel. Stand the panel on its edge, with slots up in the air (fig A). Take one of the middle floors, and slide one of its slots down into a slot of the inside wall panel, until they are firmly connected (fig.B)

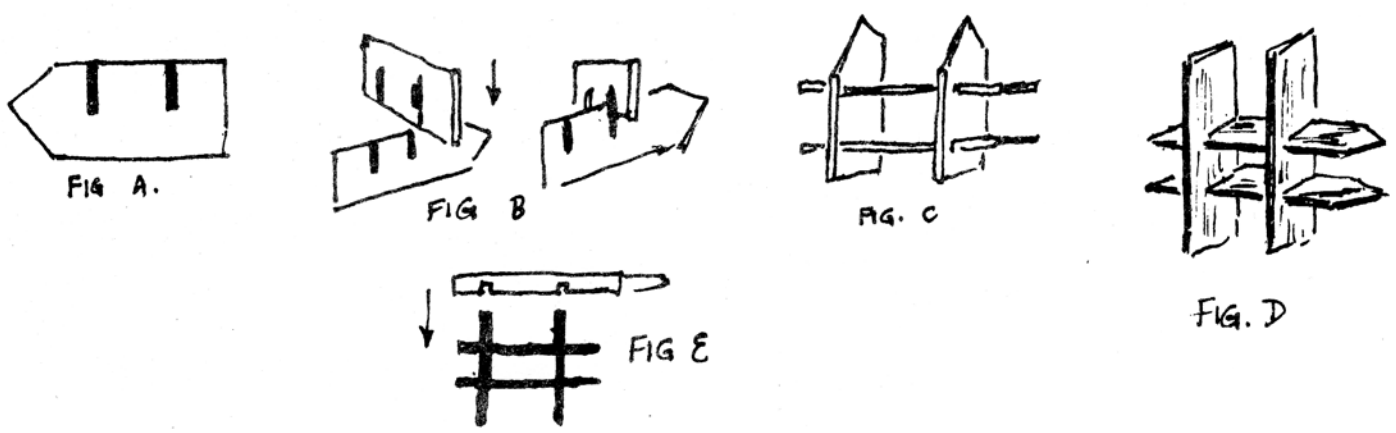
Push the inside wall panel down all the way into the groove of the middle floor, leaving the inside wall panel slightly recessed into the floor. Repeat this process with the other inside wall panel. Make sure the pieces are in an identical position- that is, roof-lines are even- otherwise your house will be crooked.

Turn over unit and slide remaining middle floor into remaining slots of interior wall panels. This assembly is identical to attachment of first middle floor. You should have a unit resembling a TIC TAC TOE board. We'll call it the "middle unit". (fig. C)

NOTE: the triangular part of the wall panels is the top-the roofline.

Now we'll attach the outside walls. Turn the "middle unit" on its side (fig D). Take an outside wall panel- Lay it with grooves face down on the ends of 2nd and 3rd floor panels (fig E)

NOTE: FITTING GROOVES MAY NOT BE QUICK- IF THERE IS ANY "FITTING" TO DO, THE KEY TO SMOOTH ASSEMBLY IS TO TAKE YOUR TIME BE PATIENT, AND DO IT THOROUGHLY !!



Line up the edges of the 2nd and 3rd floors with the 2 grooves of the outside wall. You may need to tap it.

Make sure both grooves are all the way down (fig F). Even the edges of the outside wall with the edges of the middle floors. Now nail. 1 nail on each side will do it.

WHEN NAILING, KNEEL BY SIDE OF HOUSE TO BE ABLE TO "SIGHT" THE NAIL, MAKING SURE IT GOES IN STRAIGHT. IF IT GOES IN CROOKED, IT WILL PIERCE THE SURFACE OF THE FLOOR OR CEILING...SO START AGAIN IF IT DOESN'T LOOK LIKE YOU'RE GOING TO GET IT RIGHT.

Place "middle unit" on other end. Repeat process of lining up and nailing grooves. NOW BOTH OUTSIDE WALLS ARE ATTACHED.

ATTACHING THE FRONT: Place the rear of the house (the side with the inside vertical wall recessed) on the floor or a sturdy table (fig G)

The front piece (with the window and door openings) is grooved horizontally to accept floors, and vertically to accept the edge of the outside walls.

Take the front piece, and place it on the "middle unit", grooves down. Line up the vertical grooves with outside walls, so they make proper corners, and fit the 2nd and 3rd floor edges into the appropriate horizontal grooves. FIGURE M

It is probably easiest to line up the corners first, and tack the front to the outside walls. Make sure that the grooves are in place close to the corners, and after nailing, go back and make sure the horizontal grooves are in place, reaching underneath the front. When they are, tack the front to the vertical interior walls, top & bottom on each.

SINCE THE FLOORS ARE $\frac{1}{2}$ " , THEY WILL BEND. THIS MAKES FITTING THEM INTO THE GROOVES SLIGHTLY DIFFICULT-HOWEVER, DO NOT WORRY IF THEY SEEM WARPED-THE HOUSE DESIGN WILL COUNTERACT THAT BY THE TIME YOU'RE DONE.

Now you're ready to set the house on the "foundation". The base panel has a groove in it-this is for the front piece to fit into. (fig H). You will find that when the front is in the groove properly, the bottom edges of the outside walls line up with the edge of the base. For permanent attachment, put glue in the groove before assembling. Otherwise, just tack the bottom edge of outside walls to base. The frame is complete.

ROOF- Set narrow roof piece on edge. Place wide piece at right angles to the narrow piece, on top of narrow piece. Nail into wide piece (fig I) Roof hooks over peak; wide piece is front of roof, should be tacked onto house.

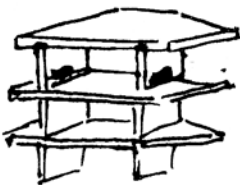


FIG. F



FIG. G

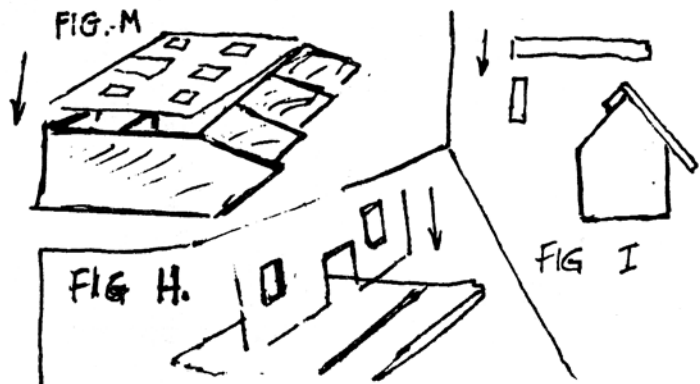


FIG. H.

FIG. I

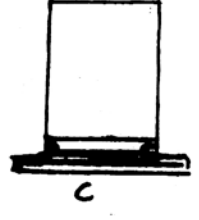
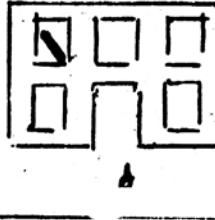
STAGE TWO:

If house has been put together, take off front to attach trim. KEEP A PIECE OF SANDPAPER HANDY TO SMOOTH ANY ROUGH EDGES. USE ELMER'S GLUE. INSTRUCTIONS BEGIN WITH OUTSIDE TRIM.

Window sills: Look like tall "H". Strip off furring or burrs from in-or-outside of grooves. Sill has 2 grooves-wider groove is bottom, narrower groove is to receive window pane. It goes on top. Narrow groove goes toward front of house. Insert sill diagonally into window. End of "H" fits over window side. Slide down opposite end of sill.

THIS WILL SQUARE UP THE WINDOW FOR YOU, MAKING THE TRIM EASIER TO PUT ON STRAIGHT.

Next, glue 1/2" X 4 1/2" strip vertically on each side of the outside of each window-- overlap inside edge of each window slightly.



Next: glue 1/2" X 3 9/16" piece horizontally on top of the outside of each window. Butt the bottom edge to the tops of the outside verticals -Repeat this process with all 5 windows--wait til the trim is dry, then turn panel over, so that inside is facing you.



Take the plastic film off window. Slide bottom edge of window into bottom groove of window sill, then push top of window forward to meet outside horizontal window trim. When you're sure of how this works, take window out and glue to inside window trim by repeating process. Elmer's Glue does not work well here, so we recommend a model glue--like Duco Cement.



Next: When window is glued, take 1/2" X 4 1/2" piece, and glue vertically on window opening, with bottom edge against sill (inside wind. vert.) One on each side of window.

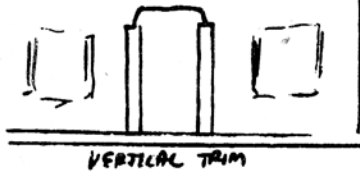
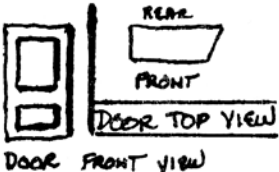
Next: 1/2" X 3 9/16" piece is inside window top trim. It overlaps the inside vertical trim. Space evenly.

Next: When all glued pieces have dried, turn over front piece and: glue on shutters; attach mullions (they fit together, and then into window opening, from front) either with friction or glue.

DOOR TRIM AND DOOR: Nails, hinges, and knob are packed in masking tape.

USE A TACK HAMMER!! Outside door trim is similar to outside window trim. Glue verticals (1/2" X 7") on outside first. Since the front panel fits into the groove on the base, the outside door trim will start 1/8" from the bottom edge. Or, to avoid measuring, draw a line at that spot when you put the front in the groove.

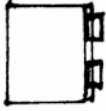
KEEP THEM AS STRAIGHT AS POSSIBLE! Overlap the door opening slightly. Cap off with horizontal trim 1/2" X 4 1/16 " Butt against top end of door vertical trim--evenly spaced.



TURN OVER PANEL:

INSIDE DOOR TRIM: Repeat process with 1/2" X 7" strips, cap off with 1/2" X 4 1/16" horizontal molding. Inside trim cannot IN ANY WAY overlap the door edge.

CORRECTLY HINGED



ATTACHING DOOR: Glue 1/2" X 6 11/16" piece to right rear side of door. It cannot overlap edges.

Use a clamp or rubber bands to keep trim piece flat. After trim is dry, attach hinges. Hinges must be even with inside edge of door. If hinges are crooked, Door will not swing properly, and thus will not fit opening. Hinges will be attached to trim piece on inside (right side) of door. Door will swing IN from front. Hinges can be nailed (using enclosed 1/2" nails) or glued with hot glue gun or some extra-strength glue. Wood glue will not work. Nail with tack hammer. Hold nails with needle-nose pliers. Folding hinge will help you line it up evenly.

After hinges are attached to door, turn door over & tap in door knob with hammer.

Birch square 1/2" thick X 3" X 3" is the front step. It fits under door. Then nail (or glue) hinges to inside of door opening edge. Don't forget to put the step in first. IT MAY TAKE A FEW TIMES TO GET THE DOOR RIGHT, so take your time, and don't permanently attach the door until you're sure you know where it goes!

Also included are 3 pieces that form the door overhang- a triangle 3/8" thick, and 2 1/2" thick pieces 1 1/2" X 3", with slanted edge. the 2 1/2" pieces form the roof, and get glued, with a slight overhang, to the triangle. Then the whole unit is glued over the door trim on the outside.



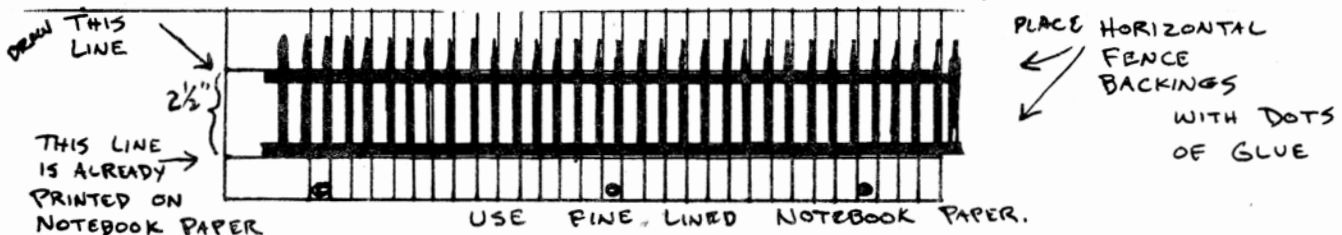
Assembling stairs: stairs consist of panel, 13 stairs, 12 small treads, 1 large tread. Sand all surfaces that you want smooth. Then glue stairs to panel. (lay panel flat first)

Space evenly. Then glue 12 small treads (1/8" thick X 7/8 X 2") to stairs, starting with what will be the bottom. Last: glue large tread (1 3/8" X 2) to top of stairs. This tread will hold the stairs up.



Assembling fence: Fence consists of pickets, 4 pcs 1/2" x 6" (side backings) 4 pcs 1/2" x 11 3/4" (front backings), 2 pcs 3/8" x 6 3/16" (side section bottom trim), 2 pcs. 3/8" x 12" (front, bottom trim). Trick to assembly: Use fine-lined notebook paper, draw parallel line to border, 2 1/2" apart. Put dot of glue on backings, and lay them (glue face down) on inside edge of parallel lines. Then glue pickets, 1 to left of fine line. When dry, pull up backings. Detach from paper and sand glue spots. Repeat for 2 sdes, 2 frnts

Attach fence around front yard, starting with one side, and leaving opening in front for walk. GIVE OR TAKE - SEE DRAWING ON FIRST PAGE, TOP LEFT



Glue 3/8" strips on bottom outside edge of fence. That's the finishing touch -- Don't forget that you can add extensions when you want more room -- ask your dealer or call Real Good Toys at (802) 479-2217 -- AND - if you have any questions, PLEASE write and ask us. We really care ! Have fun!